

ANNUAL REPORT is published by the Columbia Public School District as a public service to the parents of school-age children and district residents. The Columbia Public School District does not discriminate on the basis of race, color, religion, gender, gender identity, gender expression, sex, sexual orientation, national origin, ancestry, disability, age, or use of leave protected by the Family and Medical Leave Act, in its programs, activities, or with regard to employment. The Columbia Board of Education is an equal opportunity employer. Inquiries regarding Columbia Public Schools' compliance with IDEA and Section 504 regulations should contact Special Services at 1818 W. Worley Street, Columbia, MO 65203.

Aslin Administration Building
1818 W. Worley Street
Columbia, MO 65203

NON-PROFIT ORG
US POSTAGE
PAID
COLUMBIA MO
PERMIT #609

ECRWSS POSTAL CUSTOMER

ANNUAL REPORT 2021-2022



Columbia
PUBLIC SCHOOLS



A MESSAGE FROM THE SUPERINTENDENT



Dr. Brian Yearwood

In Columbia Public Schools, we believe in prioritizing scholars and supporting their learning and success.

The 2022-23 school year marks the 150th Anniversary of Columbia Public Schools and we are honored to reach this milestone. For a century and a half, CPS has built on the progress of years past to fulfill its mission to be the best school district in the state and provide an excellent education for all scholars.

The six core values of trust, integrity, transparency, collaboration, empathy and grace are embedded in everything we do in CPS.

As we continue to build on the current progress of Columbia Public Schools our focus is on: Scholars First with an emphasis on growth, innovation and achievement.

Growth

We will continue academic growth and enrichment opportunities for all scholars and respond to our community's growth with a focus on meeting the demands of the future.

Innovation

We will provide opportunities for our scholars to authentically engage and encourage critical thinking and problem-solving skills in innovative classroom learning environments.

Achievement

We will measure academic achievement and individual progress across the district to demonstrate the success of our scholars and underscore our commitment that every scholar graduates college-, career- and life-ready.

CPS is made up of exceptional schools, scholars, teachers and staff. Our continued work toward excellence is possible because of the support of our community and its investment in our schools.

Sincerely,
Dr. Brian Yearwood
Superintendent
Columbia Public Schools

“For 150 years CPS has molded Columbia’s youth into educated, active and productive members of society. We look forward to continuing that tradition.”

Board of Education President
David Seamon

ABOUT THE DISTRICT

Columbia Public Schools is the fifth largest school district in Missouri. It includes 21 elementary schools, seven middle schools, four high schools and the Columbia Area Career Center, as well as an early childhood education program. Total enrollment is 18,527 students.

The school district is accredited by the Missouri Department of Elementary and Secondary Education, citing such educational advantages as:

Comprehensive curriculum and services at all grade levels, preschool and adult

Exceptional programs for at-risk students and students with special needs

Extensive depth and breadth in middle school and high school course offerings

Award-winning career education programs designed for all students

Successful community partnerships and volunteer programs

Significant emphasis on staff development and school improvement efforts

Columbia’s students excel in the classroom and in their post-secondary education careers. Approximately 85-90 percent of Columbia students extend their education beyond high school, with 67.5 percent attending a college, university or post-secondary program.

Student performance on the ACT and SAT exams exceed state and national averages. In 2021, 84.7 percent of graduates took the ACT. Additionally, of the 1,310 students taking advanced placement courses in 2021, nearly 72 percent earned college credit.

Our district’s teachers represent the primary reason Columbia’s schools and students are so successful. More than 72 percent of teachers hold a master’s degree or higher and average 12.5 years of professional experience.

The community understands the importance of maintaining a high-quality educational program. Most recently, bond issues were passed in 1994, 1996, 1998, 2000, 2002, 2004, 2007, 2010, 2012, 2014, 2016, 2018, 2020 and 2022. A tax levy increase received voter approval in 1999, 2003, 2012 and 2016.

Columbia Public Schools is also ranked as a top 10 district for exemplary and innovative use of technology by the National School Boards Association and ranked in the top 10 percent of school districts nationwide by Niche.com.

The district’s focus,
from preschool to
adult career education,
is excellence.

BOARD OF EDUCATION

PRESIDENT
David Seamon

VICE PRESIDENT
Chris Horn

MEMBERS
Katherine Sasser
Jeanne Snodgrass
Helen Wade
Suzette Waters
Blake Willoughby

ENROLLMENT, STAFF and FACULTY FACTS

44.7%

Free or Reduced-Price
Lunch

6.66%

English Language
Learners

10.4%

Special Education

18,527
STUDENTS

PK – 12

48.5% 51.5%



16

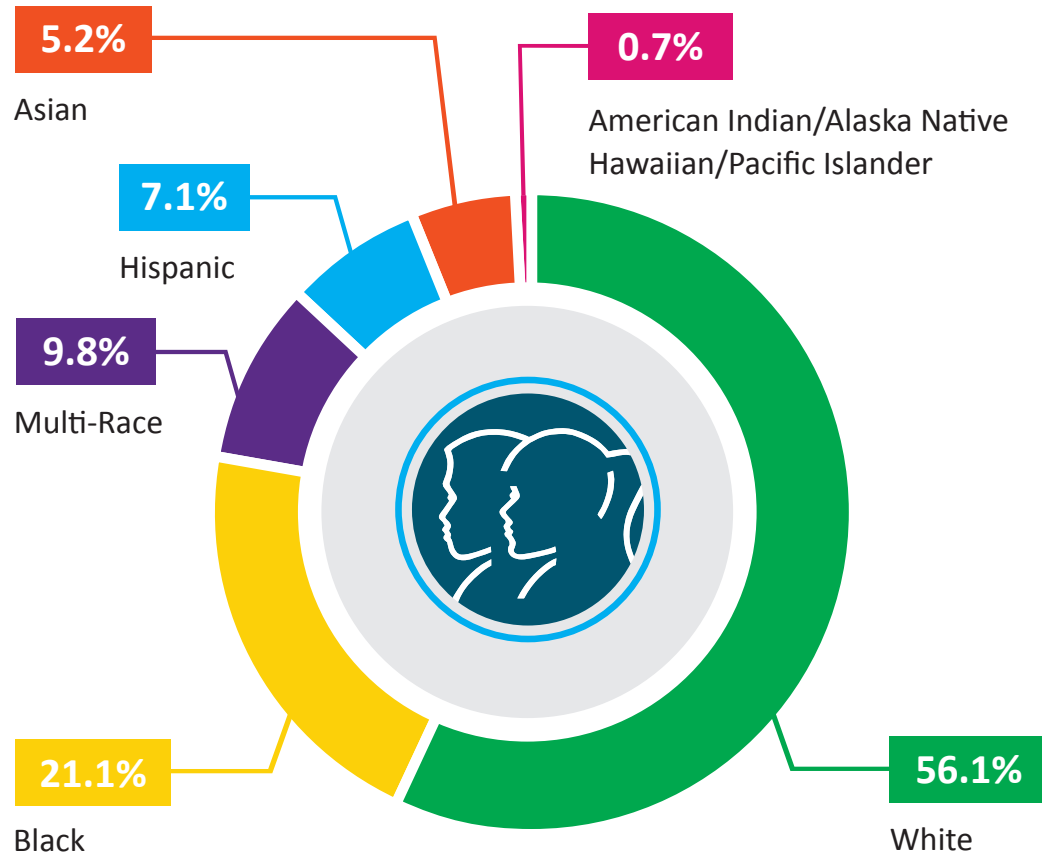
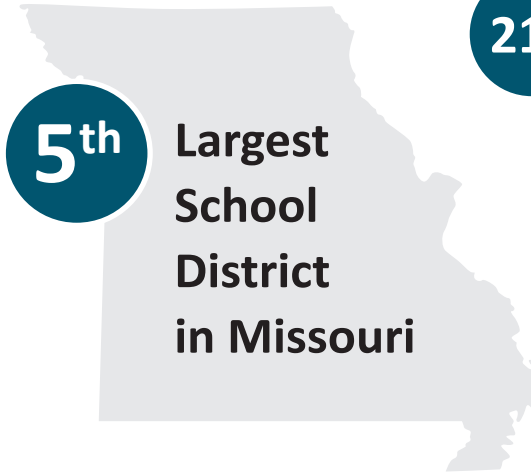
students to classroom teachers

216

students to administrators

5th

Largest
School
District
in Missouri



42
BUILDINGS

120
(FTE)

Administration

principals
assistant principals
directors
supervisors
coordinators
central office

1,451
(FTE)

Teachers

classroom teachers
special services
instructional coaches

2,944
(TOTAL)

Employees

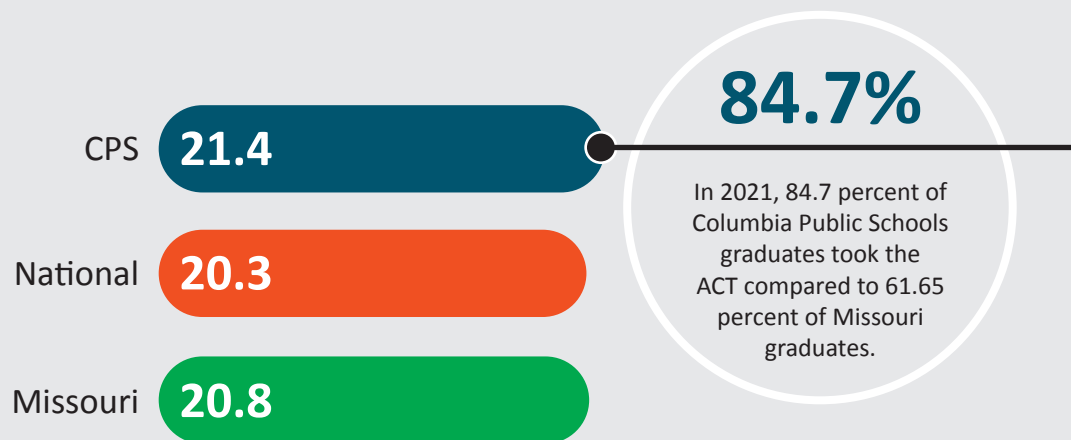
1,219
(FTE)

Student Support

secretaries
aides
food service
guidance
security
parent educators
nurses
transportation
custodians
technology
permanent subs
AVID tutors

STUDENT ACHIEVEMENT

ACT COMPOSITE SCORES FOR 2021



Percent of students with at least 82.4% attendance in 2021

Attendance Rate

89.4%

Graduation Rate

91.5%

1,478

AP EXAMS
WERE TAKEN
2021

1,310

AP STUDENTS
ENROLLED

72%

EARNED A 3
OR HIGHER

3,233

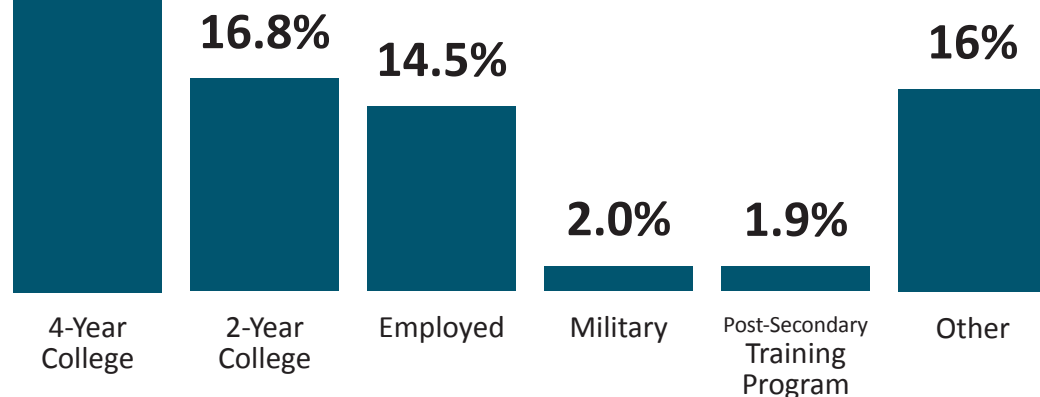
EARLY COLLEGE
CREDITS
EARNED

48.8%



2021 GRADUATE FOLLOW-UP

All students graduate college-, career- and life-ready.
67.5% of the district's students attend college or a post-secondary program



COLUMBIA PUBLIC SCHOOLS EARLY COLLEGE PROGRAM STATISTICS

Students earn 10-12 college hours per semester while concurrently satisfying high school graduation requirements.

37

Students made
the fall MACC
President's List
GPA of 4.0

24

Students made
the fall MACC
Dean's List
GPA of 3.5 to 3.99

60%

Students
competed in a
MSHSAA
activity

120

Students
started
fall semester
2021-2022

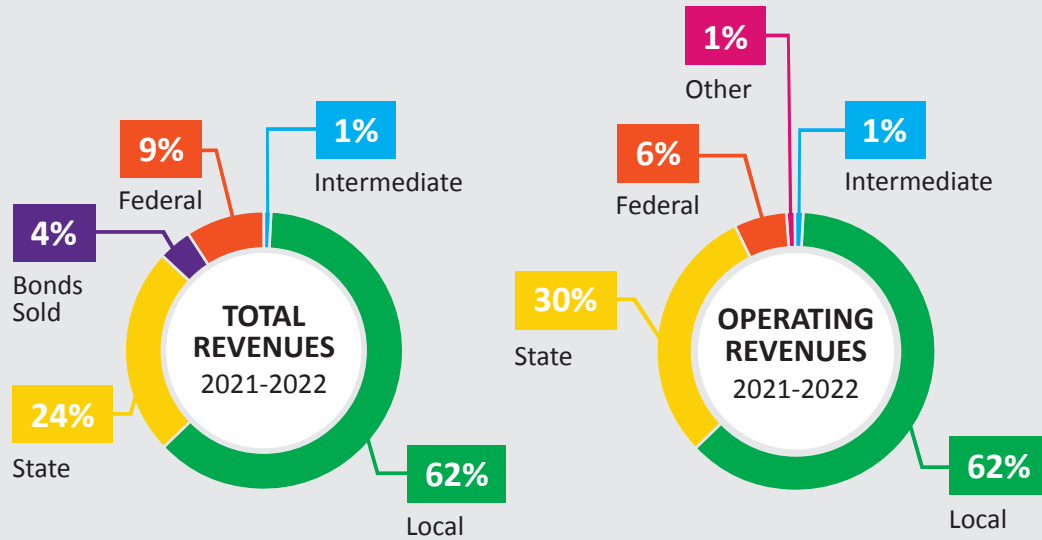
114

Students
started
spring semester
2021-2022

36

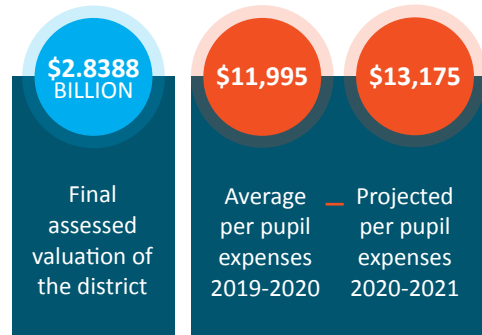
Students received their associate degree
during the 2021-2022 school year.

FINANCES 2021 – 2022



2021-2022 Revenue Projected Actual

	TOTAL	OPERATING
Property Taxes	\$158,475,268	\$128,709,695
Sales Taxes	\$22,448,991	\$22,448,991
Foundation Formula	\$66,353,679	\$66,270,981
Other - State	\$9,228,670	\$8,304,748
Federal	\$28,380,268	\$16,215,543
Sale of Bonds	\$11,421,045	-
Other	\$16,242,128	\$7,044,926
	\$312,550,049	\$248,994,874



Adjusted TAX RATE of the District

	2021
TOTAL TAX RATE \$5.6932 per \$100 of assessed valuation	
Incidental/General	\$1.6055
Teachers	\$3.0158
Debt Service	\$0.9719
Capital Projects	\$0.10000

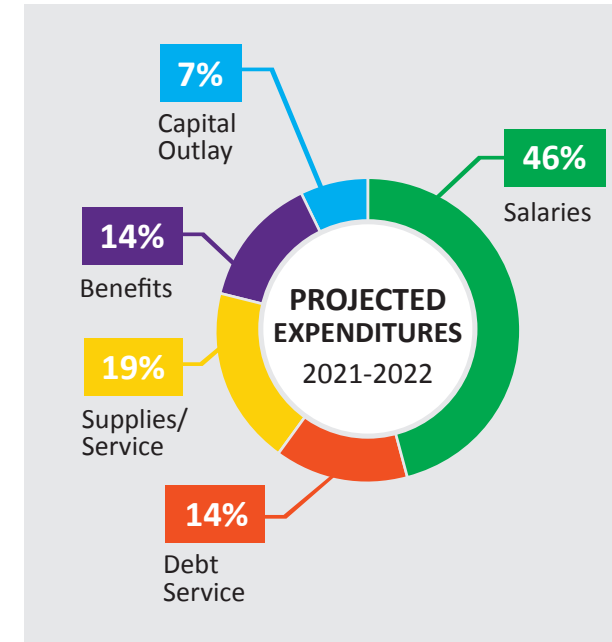
2021-2022 Expenditures by Fund Comparison

	BUDGETED	PROJECTED ACTUAL
General	\$96,132,435	\$93,729,383
Special Revenue (teachers)	\$156,870,009	\$154,789,838
Debt Service	\$35,744,975	\$47,127,527
Capital Projects	\$34,855,048	\$23,427,850
Other	\$16,976,616	\$14,878,485
	\$340,579,083	\$333,953,083

Columbia Public Schools maintains a balanced budget, guided by a long-range financial plan and planning parameters focused on Achievement, Enrichment and Opportunity.

Total expenditures by object show how CPS actually spends the dollars budgeted. Salaries and benefits account for nearly 62 percent of total expenditures and 80 percent of operating expenditures.

The school district continues 100% fully-funded benefits for all full-time staff.



2021-2022 Expenditures by Object

	BUDGETED	PROJECTED ACTUAL
Salaries	\$154,028,447	\$152,263,543
Services/ Supplies/ Capital Outlay	\$102,396,294	\$86,203,223
Employee Benefits	\$46,892,572	\$46,588,922
Debt Service/ Lease Purchase	\$35,744,975	\$47,127,527
Other Financing Uses	\$1,516,795	\$1,769,868
	\$340,579,083	\$333,953,083

HIGHLIGHTS

ATHLETIC & ACTIVITIES ACHIEVEMENTS

ROCK BRIDGE HIGH SCHOOL



BOYS' TRACK & FIELD
MSHSAA Class 5 State Champions

INDIVIDUAL MSHSAA STATE CHAMPIONS

Track & Field

Tamrya Nevills (RBHS) – *Track & Field Discus Throw*
Chris Giles (RBHS) – *Track & Field 100m Dash*
Chris Giles (RBHS) – *Track & Field 400m Dash*
Andrew Hauser (RBHS) – *Track & Field 1600m Run*
Drevyn Seamon, Chris Giles, Cooper Allen and
Casey Hood (RBHS) – *Track & Field 4x100 Relay*
Drevyn Seamon, Chris Giles, Cooper Allen and
Casey Hood (RBHS) – *Track & Field 4x400 Relay*

Tennis

Akhilan Elangovan and **Max Litton** (RBHS) – *Tennis Individual Doubles*

Swimming and Diving

Olivia Liddle (RBHS) – *One Meter Diving*

Wrestling

Hank Benter (HHS) – *106 lb weight class*
Hayden Benter (HHS) – *126 lb weight class*
Carter McCallister (RBHS) – *138 lb weight class*

Cross Country

Andrew Hauser (RBHS) – *Cross Country*

SPEECH AND DEBATE

Ahmad Ennin (RBHS) – *Humorous Interpretation*

COLUMBIA AREA CAREER CENTER STATE CHAMPIONSHIP WINNERS

DECA

India Bratrud, Eliette Orr and **Ben Rumanyika**

Future Business Leaders of America (FBLA)

Shreya Dasari and **Mika Angelovici**

Future Farmers of America (FFA)

Jack Malone, Gentry Duncan, Hayden Duncan, Tivon Straub, Hunter Snow, Ethan Vanderwert, Sam Tummons, Abigail Eddy, Lauren Neimeyer, Madilynn Wehmeyer, Ethan Cooper and **Charlie Hazelrigg**

Health Occupations Students of America (HOSA)

Ray Adelstein, Hannah Kuhnert, Anish Ganga, Kevin Mao and **Evrin Agca**

Missouri Educator Rising

Lucy Sadewwhite, Morgan Bussard, Madison McAnelly, Christina Cox and **Emma Petersen**

SkillsUSA Missouri

Eli Hanson, Jonathan Imboden, Christopher King, Theodora "Dora" Grafakos, Owen Kington and **Judah Robbins Bernal**

SPELLING BEE

Aanya Shetty, 8th grader of John Warner Middle School, competed in the Scripps National Spelling Bee in Washington, D.C.

TEACHER RECOGNITION

Cassidy Urie, 6th grade math teacher at Jefferson Middle School, was awarded the Presidential Award for Excellence in Mathematics and Science Teaching.

These awards honor the role teachers play in supporting learners who will be future STEM professionals.

This is the highest recognition a teacher can receive in this field.



ACADEMIC ACHIEVEMENTS

PURDUE STAMPS SCHOLARS

Rock Bridge High School senior, **Genevieve Harline**, and Muriel Battle High School senior, **Jasper Holland**, are recipients of the 2022-2026 University of Missouri Stamps Scholars awards.



Genevieve Harline



Jasper Holland

PRESIDENTIAL SCHOLAR

Kyle Chen of Rock Bridge High School was selected as a member of the 58th class of the U.S. Presidential Scholars, along with 161 students from across the country. This is the highest academic honor a scholar can receive. Chen is Columbia Public Schools' 23rd Presidential Scholar.



NATIONAL MERIT FINALISTS

Congratulations to these 22 students who were named National Merit Finalists.

Hickman High School – **Ryan Banks, Henry Huff, Joshua Kome, Eliette Orr, Ethan Sims, Stanley Thorpe, Jessica Xie** and **Stephen You**

Rock Bridge High School – **Abigail Bridgeman, Akhilan Elangovan, Bethany Eppinger, Mallory Gard, Genevieve Harline, Emma Howell, Brandon Kim, Maggie Lin, Peter Popescu, Rohan Rao, Edward Shang, Benjamin Xu** and **Zihao Zhou**

Muriel Battle High School – **Jasper Holland**

Perfect
ACT
Scores

**HICKMAN
HIGH SCHOOL**
Henry Huff
Noah Zheng

**MURIEL BATTLE
HIGH SCHOOL**
Jasper Holland

**ROCK BRIDGE
HIGH SCHOOL**
Yogev Angelovici
Kyle Chen
Bethany Eppinger
Emma Howell
George Jia
Brandon Kim
Maggie Lin
Elizabeth Sherwin

2022 VALEDICTORIANS



HICKMAN HIGH SCHOOL

Emma Alberty
Linnea Geenen
Isabella Graham
Grant Kaplan
Ayla Mehr
Joshua Kome
Ellianna Leigh
Mia Perez
Rachel Weber
Jayu Yun



ROCK BRIDGE HIGH SCHOOL

Abigail Bridgeman	Aisha Ibitoye	Rohan Rao
Kyle Chen	Brandon Kim	Noah Robinson
Campbell Deneke	Hannah Kuhnert	Elizabeth Sherwin
Emma Ellison	Maggie Lin	Evelyn Wilbur
Genevieve Harline	Carmen Mar	Zihao Zhou
Emma Haupt	Christopher Mesfin	
Emma Howell	Peter Popescu	

BATTLE HIGH SCHOOL

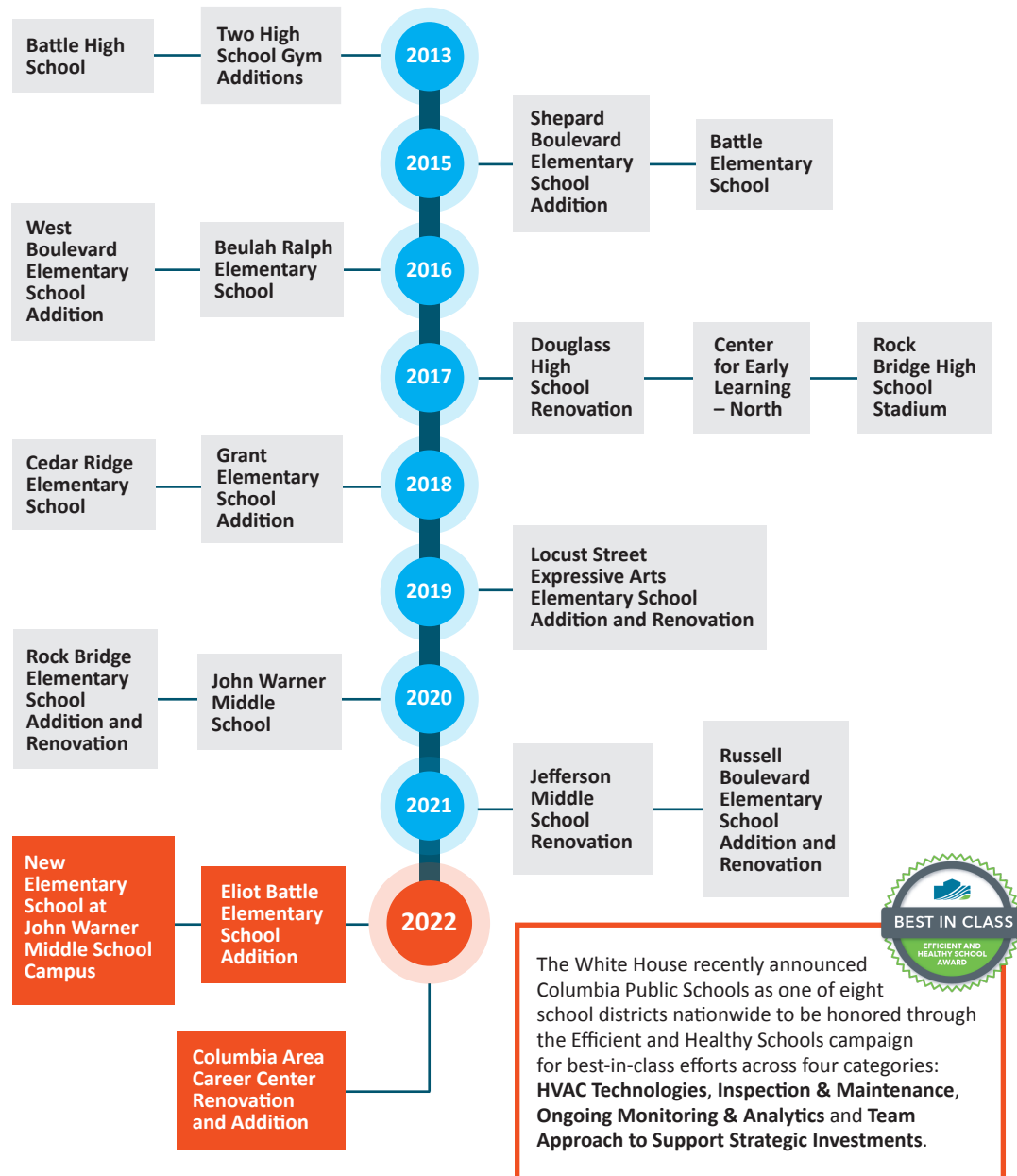
J'Bonae McDonald
Jonas Ferguson
Olivia Walsh



BOND PROJECTS THROUGH THE YEARS

GROWTH

In a growing community like Columbia, it's imperative to have public support to fund projects and improvements. Columbians consistently rise to the challenge, voting on ballot measures so our children can have the best educational experiences possible. From the gradual elimination of trailers to the construction of new schools, Columbia Public Schools is committed to having high-quality facilities and learning environments.



DISTRICT STATS & FACTS

SCHOOL IMPROVEMENTS

- Security and ADA updates at West Boulevard, New Haven, Two Mile Prairie, Parkade, Shepard Boulevard and Derby Ridge elementary schools and Battle High School
- Work on the new addition at Jefferson Middle School such as adding brick veneer, installing new electrical and water service and working on the new track and field area
- HVAC work at Hickman High School and lighting upgrades at the Hickman High Little Theater including the addition of stage lighting and a wireless control system
- Completion of the Rock Bridge Elementary School addition
- Playground equipment installed at Paxton Keeley Elementary School
- Water heater replacement at Smithton Middle School
- Parking lot replacement at Fairview Elementary School
- Softball shed addition at Rockbridge High School
- Painting and light fixture replacement throughout the building at Park Avenue Headstart Preschool
- Sidewalk replacement at Gentry Middle School



3,566,743
SQUARE FEET
OF BUILDING
SPACE

799 acres maintained



2,386,763 square feet of roofs



SCHOOL DIRECTORY



Alpha Hart Lewis
Elementary School
5801 Arbor Pointe Pkwy.
Columbia, MO 65202
573-214-3200
cpsk12.org/ahl



Fairview
Elementary School
909 Fairview Rd.
Columbia, MO 65203
573-214-3590
cpsk12.org/fve



Paxton Keeley
Elementary School
201 Park DeVille Dr.
Columbia, MO 65201
573-214-3570
Cpsk12.org/kee



Gentry
Middle School
4200 Bethel St.
Columbia, MO 65203
573-214-3240
cpsk12.org/gms



Battle
High School
7575 E. St. Charles Rd.
Columbia, MO 65202
573-214-3300
cpsk12.org/bhs



Park Avenue
Headstart Preschool
403 Park Ave.
Columbia, MO 65201
573-449-1575



Benton STEM
Elementary School
1410 Hinkson Ave.
Columbia, MO 65201
573-214-3610
cpsk12.org/bee



Grant
Elementary School
10 E. Broadway
Columbia, MO 65203
573-214-3520
cpsk12.org/gre



Ridgeway
Elementary School
107 E. Sexton Rd.
Columbia, MO 65203
573-214-3550
cpsk12.org/rwe



Jefferson
Middle School
713 Rogers St.
Columbia, MO 65201
573-214-3210
cpsk12.org/jms



Douglass
High School
301 N. Providence Rd.
Columbia, MO 65203
573-214-3680
cpsk12.org/dhs



A.C.E. (Alternative
Continuing Education)
1200 N. 7th St.
Columbia, MO 65201
573-825-7769



Beulah Ralph
Elementary School
5801 S. Highway KK
Columbia, MO 65203
573-214-3840
cpsk12.org/beu



Locust Street Expressive
Arts Elementary School
1208 Locust St.
Columbia, MO 65201
573-214-3530
cpsk12.org/lse



Rock Bridge
Elementary School
5151 S. Highway 163
Columbia, MO 65203
573-214-3290
cpsk12.org/rbe



John Warner
Middle School
5550 Sinclair Rd.
Columbia, MO 65203
573-214-3890
cpsk12.org/jwms



Hickman
High School
1104 N. Providence Rd.
Columbia, MO 65203
573-214-3000
cpsk12.org/hhs



Roseta Avenue Center
1100 Roseta Ave.
Columbia, MO 65201
573-214-3510



Blue Ridge
Elementary School
3700 Woodland Dr.
Columbia, MO 65202
573-214-3580
cpsk12.org/bre



Midway Heights
Elementary School
8130 W. Highway 40
Columbia, MO 65202
573-214-3540
cpsk12.org/mwe



Russell Boulevard
Elementary School
1800 W. Rollins Rd.
Columbia, MO 65203
573-214-3650
cpsk12.org/rue



Lange
Middle School
2201 Smiley Ln.
Columbia, MO 65202
573-214-3250
cpsk12.org/lms



Rock Bridge
High School
4303 S. Providence Rd.
Columbia, MO 65203
573-214-3100
cpsk12.org/rbhs



Eugene Field Center
1010 Rangeline St.
Columbia, MO 65201
573-214-3750
cpsk12.org/eee



Cedar Ridge
Elementary School
2345 Howell Mountain Dr.
Columbia, MO 65201
573-214-3880
cpsk12.org/cre



Mill Creek
Elementary School
2200 W. Nifong Blvd.
Columbia, MO 65203
573-214-3280
cpsk12.org/mce



Shepard Boulevard
Elementary School
2616 Shepard Blvd.
Columbia, MO 65201
573-214-3660
cpsk12.org/she



Oakland
Middle School
3405 Oakland Pl.
Columbia, MO 65202
573-214-3220
cpsk12.org/oms



Columbia Area
Career Center
4203 S. Providence Rd.
Columbia, MO 65203
573-214-3800
career-center.org



Bethel Street Center
4600 Bethel St.
Columbia, MO 65203
573-214-3740



Derby Ridge
Elementary School
4400 Derby Ridge Dr.
Columbia, MO 65202
573-214-3270
cpsk12.org/dre



New Haven
Elementary School
3301 New Haven Rd.
Columbia, MO 65201
573-214-3640
cpsk12.org/nhe



Two Mile Prairie
Elementary School
5450 N. Route Z
Columbia, MO 65202
573-214-3560
cpsk12.org/tmp



Smithton
Middle School
3600 W. Worley St.
Columbia, MO 65203
573-214-3260
cpsk12.org/sms



Center for Early
Learning - North
2191 Smiley Ln.
Columbia, MO 65202
573-214-3950
cpsk12.org



Eliot Battle
Elementary School
2600 Battle Ave.
Columbia, MO 65202
573-214-3790
cpsk12.org/bes



Parkade
Elementary School
111 Parkade Blvd.
Columbia, MO 65202
573-214-3630
cpsk12.org/pke



West Boulevard
Elementary School
319 West Boulevard N.
Columbia, MO 65203
573-214-3670
cpsk12.org/wbe



West
Middle School
401 Clinkscals Rd.
Columbia, MO 65203
573-214-3230
cpsk12.org/wms



Early Childhood
Discovery Center
901 Rainforest Pkwy.
Columbia, MO 65202
573-214-3430
cpsk12.org